



ECONOMIC INDICATORS

NEW SOUTH WALES

EMBARGO: 11:30AM (CANBERRA TIME) MON 15 MAY 2000

C O N T E N T S

	<i>Page</i>
Notes	2
NSW overview.	3
Main features	4
List of tables and graphs	5
Population	6
Labour	7
Production	10
Building	11
Retail trade	12
New motor vehicle registrations	13
Tourism	14
Consumer and producer price indexes.	15
Finance	16
State Government finance	17
Investment.	18
International trade.	19

- For further information about these and related statistics, contact Merran Butler on Sydney 02 9268 4194, or the National Information Service on 1300 135 070.

NOTES

FORTHCOMING ISSUES

<i>ISSUE</i>	<i>ISSUE DATE</i>
June 2000	15 June 2000
July 2000	17 July 2000
August 2000	15 August 2000
September 2000	15 September 2000
October 2000	16 October 2000
November 2000	15 November 2000

GENERAL

This publication provides information on a wide range of economic indicators which are the latest available at the time of publication. In a number of cases, figures appearing in this summary are preliminary and are subject to revision in subsequent issues.

SEASONAL ADJUSTMENT AND TREND ESTIMATION

Seasonal adjustment is a means of removing the estimated effects of normal seasonal variation from a series so that the effects of other variations on that series can be more clearly recognised. Seasonal adjustment does not aim to remove the irregular or non-seasonal influences which may be present. This means that movements of seasonally adjusted estimates may not be reliable indicators of trend behaviour. Smoothing seasonally adjusted series produces a measure of the underlying trend by reducing the impact of the irregular component of the series. This smoothing technique does result in revisions to the most recent estimates as additional observations become available. For an explanation of seasonal adjustment derivation, refer to the publication *Seasonally Adjusted Indicators* (Cat. no. 1308.0).

STANDARD ERRORS OF ESTIMATES

One measure of the variability which occurs as a result of surveying only samples of the total business population is the standard error. There are about two chances in three that a survey estimate is within one standard error of the figure that would have been obtained if all businesses had been included, and about 19 chances in 20 that it is within two standard errors. The standard error can also be expressed as a percentage of the estimate and this is known as the relative standard error (RSE).

For detailed explanatory notes and definitions for the items shown in this publication, readers are referred to the specific ABS publications.

Current publications produced by the ABS are listed in the *catalogue of publications* (Cat. no. 1101.0). A *release advice* (Cat. no. 1105.0) is issued on Tuesdays and Fridays which lists publications to be released in the next few days. These publications are available from any ABS office.

SYMBOLS AND OTHER USAGES

kWh	kilowatt hour
teraJ	terajoule
n.a.	not available
n.p.	not available for publication but included in totals where applicable
n.y.a	not yet available
r	figure or series revised since previous issue
. .	not applicable
—	nil or rounded to zero
—	break in continuity of series (where a line is drawn across a column between two consecutive figures)

Gregory W. Bray
Regional Director
New South Wales

NSW OVERVIEW

EMPLOYMENT	Employment in NSW increased by 0.3% in March 2000 to a seasonally adjusted figure of 3,013,900. National employment in March 2000 was 8,970,700.
UNEMPLOYMENT	Unemployment in NSW increased by 3.7% to a seasonally adjusted figure of 193,300 in March 2000. The unemployment rate increased from 5.8% in February 2000 to 6.0% in March 2000. The national unemployment rate was 6.9% in March 2000.
BUILDING APPROVALS	The seasonally adjusted number of new dwelling units approved for NSW in February 2000 increased 8.1% from the previous month to 4,450.
NEW MOTOR VEHICLE REGISTRATIONS	New motor vehicle registrations for NSW in seasonally adjusted terms in February 2000 increased by 4.7% on the previous month to 22,348.
FINANCE	The seasonally adjusted value of housing finance commitments for owner occupation in NSW in February 2000 was \$2,709 million, down 0.1% on the previous month but an overall increase of 37.6% on February 1999.
IMPORTS AND EXPORTS	The customs value of imports into NSW during February 2000 was \$3,712 million, an increase of 7.5% on January 2000. The value of exports (FOB) from NSW in February 2000 was \$1,479 million, a rise of 11.1% over the same period.
GOVERNMENT FINANCE STATISTICS (GFS)	<p>The General Government GFS result for the eight months ended 29 February 2000 was an underlying surplus of \$1,215 million. The result comprises a surplus of \$2,632 million on current transactions and a deficit of \$1,417 million on capital transactions.</p> <p>Total receipts amounted to \$17,487 million and total underlying outlays amounted to \$16,272 million.</p> <p>The 1999–2000 Budget projects full year receipts of \$25,987 million and total underlying outlays of \$25,773 million.</p>
RETAIL	In seasonally adjusted terms, total retail sales for NSW in February 2000 was \$4,110.8 million. For January 2000, the figure was \$4,113.7 million.

MAIN FEATURES

BUILDING APPROVALS

In seasonally adjusted terms, the number of new dwelling units approved in NSW for February 2000 was 4,450 (including 2,843 new houses). This represented an increase of 8.1% on the previous month. Compared to February 1999, the number of new dwellings approved increased by 7.9%. Nationally, the figure was 15,855 (including 11,679 new houses), a fall of 1.1% on January 2000 and 16.8% higher than the figure a year ago.

The seasonally adjusted value of new residential building for NSW in February 2000 was \$569.2 million, a fall of 7.6% over January 2000. The national figure was \$1,957.6 million, a fall of 2.0% on the previous month and up 29.0% compared to February 1999.

In original terms, the value of total building in NSW was \$926.5 million, a slight increase on January 2000 but 7.0% lower than the figure a year ago. Nationally, the figure (\$3,014.0 million) increased by 11.4% and 4.0% respectively over the same periods.

NEW MOTOR VEHICLE REGISTRATIONS

New motor vehicle registrations for NSW in seasonally adjusted terms in February 2000 rose 4.7% on the previous month to 22,348. New registrations of passenger vehicles (18,384) and other vehicles (3,965) increased 4.0% and 8.0% respectively over the same period. Nationally, new motor vehicle registrations in February 2000 fell 1.4% to 63,649 compared to January 2000.

Compared to the figures a year ago, seasonally adjusted new motor vehicle registrations for NSW in February 2000 increased by 2.7%, with passenger vehicles slightly down and other vehicles up by 18.2%. Nationally, passenger vehicles and total vehicles fell by 2.7% and 1.1% respectively while other vehicles increased by 7.4% over the same period.

LIST OF TABLES AND GRAPHS

page

POPULATION	1 Estimated resident population, NSW	6
LABOUR	2 Labour data, latest time period, NSW and Australia	7
	3 Labour data, time series, NSW	7
	4 Labour force status of the civilian population, NSW	8
	5 Graph: Unemployment rates, NSW and Australia	9
	6 Coal, electricity and gas production, latest time period, NSW and Australia	10
PRODUCTION	7 Coal, electricity and gas production, time series, NSW	10
BUILDING	8 Building approvals, latest time period, NSW and Australia	11
	9 Building approvals, time series, NSW	11
RETAIL TRADE	10 Turnover of retail establishments, latest time period, NSW and Australia	12
	11 Turnover of retail establishments, seasonally adjusted, time series, NSW	12
NEW MOTOR VEHICLE REGISTRATIONS	12 New motor vehicle registrations, latest time period, NSW and Australia	13
	13 New motor vehicle registrations, seasonally adjusted, time series, NSW	13
TOURISM	14 Accommodation Establishments, latest time period, NSW and Australia	14
	15 Accommodation Establishments, time series, Sydney and NSW	14
	16 Graph: Hotels, motels etc., monthly room occupancy rates, Sydney Tourism Region and NSW	14
CONSUMER AND PRODUCER PRICE INDEXES	17 Consumer and producer price indexes, latest time period, NSW and Australia	15
	18 Consumer and producer price indexes, time series, NSW	15
	19 Graph: Consumer Price Index, Sydney and average of 8 capital cities	15
FINANCE	20 Finance commitments, latest time period, NSW and Australia	16
	21 Finance commitments, time series, NSW	16
STATE GOVERNMENT FINANCE	22 Government finance, budget sector, time series, NSW	17
INVESTMENT	23 Actual private new fixed capital expenditure, latest time period, NSW and Australia	18
	24 Actual private new fixed capital expenditure, time series, NSW	18
	25 Graph: Actual private new fixed capital expenditure by type of asset, trend estimate, NSW	18
INTERNATIONAL TRADE	26 Imports and exports, latest time period, NSW and Australia	19
	27 Imports and exports, time series, NSW	19

1 ESTIMATED RESIDENT POPULATION—NSW

	<i>Estimated resident population at end of period</i>			<i>Increase during period</i>			<i>Mean estimated resident population for year ended</i>	
	<i>Males</i>	<i>Females</i>	<i>Persons</i>	<i>Natural increase(a)</i>	<i>Net estimated migration</i>	<i>Total increase(b)</i>	<i>30 June</i>	<i>31 December</i>
	<i>'000</i>	<i>'000</i>	<i>'000</i>	<i>'000</i>	<i>'000</i>	<i>'000</i>	<i>'000</i>	<i>'000</i>
1996	3 098.9	3 143.1	6 241.9	41.8	31.3	73.1	6 167.2	6 204.2
1997	3 128.9	3 171.5	6 300.5	40.9	17.6	58.5	6 240.9	6 276.1
1998	3 168.3	3 207.8	6 376.2	40.5	35.2	75.7	6 307.1	6 344.3
1998								
June qtr	3 146.3	3 187.2	6 333.5	9.9	4.1	14.0
September qtr	3 157.3	3 197.6	6 354.9	8.2	13.2	21.4
December qtr	3 168.3	3 207.8	6 376.2	12.1	9.1	21.2
1999								
March qtr	3 179.0	3 218.2	6 397.2	9.1	11.9	21.0
June qtr	3 186.9	3 224.8	6 411.7	9.7	4.8	14.5
September qtr	3 195.9	3 232.8	6 428.7	8.1	8.9	17.0

(a) Excess of live births over deaths.

(b) For dates prior to June 1996, differences between the total increase shown and the sum of the natural increase and net estimated migration arise from retrospective adjustments to population estimates (which are made after each Census) to compensate for any intercensal discrepancy. A description of intercensal discrepancy is contained in the ABS Information Paper: Demographic Estimates—Concepts, Sources and Methods (Cat. no. 3228.0).

Source: Australian Demographic Statistics (Cat. no. 3101.0).

2 LABOUR—NSW AND AUSTRALIA

	Unit	Latest period	Latest figure	New South Wales		Australia		
				%	%	Latest figure	Change from prior period	Change from same period prior year
Employed persons (seasonally adjusted)	'000	March 2000	3 013.9	0.3	3.8	8 970.7	0.1	2.9
Unemployed persons (seasonally adjusted)	'000	March 2000	193.3	3.7	-12.0	661.8	2.8	-5.0
Labour force (seasonally adjusted)	'000	March 2000	3 207.2	0.5	2.7	9 632.6	0.3	2.3
Participation rate (seasonally adjusted)	%	March 2000	62.5	0.3	1.1	63.6	0.2	0.8
Unemployment rate (seasonally adjusted)	%	March 2000	6.0	3.4	-14.3	6.9	3.0	-6.8
Industrial disputes—working days lost	'000	Jan 2000	7.5	-74.2	177.8	25.6	-37.7	208.4
Job vacancies	'000	Feb 2000	46.4	25.7	52.1	112.7	9.2	36.1
Average weekly employee earnings—full-time adult ordinary time earnings (seasonally adjusted)	\$	Nov 1999	805.1	2.2	4.4	763.5	1.4	3.0

Source: Average Weekly Earnings, States and Australia (Cat. no. 6302.0), Industrial Disputes, Australia (Cat. no. 6321.0), Job Vacancies and Overtime, Australia (Cat. no. 6354.0), Labour Force, Australia, Preliminary (Cat. no. 6202.0).

3 LABOUR—NSW

	Seasonally adjusted						
	Employed persons	Unemployed persons	Labour force	Participation rate	Unemployment rate	Industrial disputes (working days lost)	Job vacancies
	'000	'000	'000	%	%	'000	'000
1999							
January	2 886.8	217.6	3 104.4	61.6	7.0	2.7	..
February	2 907.8	209.3	3 117.1	61.8	6.7	40.3	30.5
March	2 904.2	219.6	3 123.8	61.8	7.0	7.8	..
April	2 903.2	212.7	3 115.9	61.6	6.8	2.1	..
May	2 920.5	203.8	3 124.3	61.7	6.5	3.1	37.5
June	2 926.9	201.6	3 128.5	61.7	6.4	3.9	..
July	2 938.2	192.1	3 130.3	61.6	6.1	23.4	..
August	2 936.1	208.2	3 144.3	61.8	6.6	32.2	48.3
September	2 948.9	217.8	3 166.7	62.2	6.9	33.8	..
October	2 967.0	190.0	3 157.0	61.9	6.0	16.7	..
November	2 960.5	176.9	3 137.4	61.5	5.6	121.4	36.9
December	2 971.5	199.9	3 171.4	62.0	6.3	29.1	..
2000							
January	2 974.0	189.5	3 163.5	61.8	6.0	7.5	..
February	3 004.5	186.4	3 190.9	62.3	5.8	n.y.a.	46.4
March	3 013.9	193.3	3 207.2	62.5	6.0	n.y.a.	..

Source: Industrial Disputes, Australia (Cat. no. 6321.0), Job Vacancies and Overtime, Australia (Cat. no. 6354.0), Labour Force, Australia, Preliminary (Cat. no. 6202.0).

4 LABOUR FORCE STATUS, NSW—ORIGINAL

	<i>Employed</i>		<i>Unemployed</i>		<i>Labour force</i>	<i>Not in labour force</i>	<i>Civilian population aged 15 years and over</i>	<i>Unemployment rate(a)</i>	<i>Participation rate(b)</i>
	<i>Full-time workers</i>	<i>Total</i>	<i>Looking for full-time work</i>	<i>Total</i>					
	'000	'000	'000	'000					
MALES									
March									
1996	1 402.2	1 583.8	129.5	150.1	1 733.9	648.8	2 382.7	8.7	72.8
1997	1 434.3	1 604.1	125.2	146.0	1 750.1	665.4	2 415.6	8.3	72.5
1998	1 434.0	1 614.9	122.2	139.4	1 754.3	694.5	2 448.8	7.9	71.6
1999									
January	1 447.1	1 633.0	124.6	140.8	1 773.8	703.8	2 477.5	7.9	71.6
February	1 453.4	1 644.9	113.5	133.1	1 778.0	702.4	2 480.3	7.5	71.7
March	1 454.3	1 661.9	102.9	126.1	1 788.0	695.2	2 483.1	7.1	72.0
April	1 456.1	1 657.8	95.6	115.5	1 773.3	713.3	2 486.6	6.5	71.3
May	1 460.0	1 662.7	93.3	110.1	1 772.8	717.2	2 490.0	6.2	71.2
June	1 459.4	1 668.1	91.6	108.0	1 776.1	717.3	2 493.4	6.1	71.2
July	1 491.8	1 687.4	83.2	101.3	1 788.7	707.7	2 496.4	5.7	71.7
August	1 464.1	1 662.6	95.9	115.3	1 777.8	721.6	2 499.4	6.5	71.1
September	1 502.7	1 696.2	97.6	124.8	1 820.9	681.5	2 502.4	6.9	72.8
October	1 504.7	1 688.4	87.4	105.5	1 793.9	712.6	2 506.4	5.9	71.6
November	1 498.9	1 681.8	81.4	95.1	1 777.0	733.5	2 510.5	5.4	70.8
December	1 530.2	1 711.0	95.2	116.1	1 827.0	687.5	2 514.5	6.4	72.7
2000									
January	1 497.6	1 680.2	104.8	119.9	1 800.1	717.6	2 517.7	6.7	71.5
February	1 503.6	1 694.0	95.8	113.8	1 807.8	713.1	2 520.9	6.3	71.7
March	1 494.2	1 701.8	93.5	114.1	1 815.9	708.2	2 524.0	6.3	71.9
FEMALES									
March									
1996	738.2	1 217.7	69.6	105.2	1 323.0	1 149.8	2 472.7	8.0	53.5
1997	724.4	1 214.4	72.4	109.0	1 323.5	1 183.6	2 507.1	8.2	52.8
1998	718.4	1 220.7	72.8	104.5	1 325.2	1 213.1	2 538.3	7.9	52.2
1999									
January	739.5	1 218.0	62.6	90.1	1 308.0	1 257.1	2 565.1	6.9	51.0
February	738.4	1 236.4	67.4	104.5	1 340.9	1 226.8	2 567.7	7.8	52.2
March	728.8	1 238.3	64.3	108.7	1 347.0	1 223.3	2 570.2	8.1	52.4
April	726.0	1 242.6	62.5	98.5	1 341.2	1 232.0	2 573.2	7.3	52.1
May	729.5	1 250.2	56.8	90.0	1 340.3	1 235.9	2 576.1	6.7	52.0
June	746.9	1 264.6	52.3	81.5	1 346.2	1 232.9	2 579.1	6.1	52.2
July	754.9	1 265.7	53.2	76.5	1 342.2	1 239.8	2 582.0	5.7	52.0
August	723.4	1 237.1	54.9	86.7	1 323.8	1 261.2	2 584.9	6.5	51.2
September	749.9	1 285.6	61.3	97.6	1 383.2	1 204.7	2 587.9	7.1	53.4
October	767.2	1 289.1	51.3	77.1	1 366.2	1 225.1	2 591.3	5.6	52.7
November	756.5	1 283.3	50.5	71.8	1 355.1	1 239.7	2 594.8	5.3	52.2
December	788.4	1 307.0	54.7	80.9	1 387.9	1 210.4	2 598.3	5.8	53.4
2000									
January	776.9	1 257.2	55.3	80.7	1 337.9	1 262.8	2 600.7	6.0	51.4
February	755.7	1 282.3	57.0	98.2	1 380.5	1 222.7	2 603.2	7.1	53.0
March	771.1	1 307.8	57.0	92.4	1 400.2	1 205.4	2 605.6	6.6	53.7

For footnotes see end of table.

4 LABOUR FORCE STATUS, NSW—ORIGINAL—continued

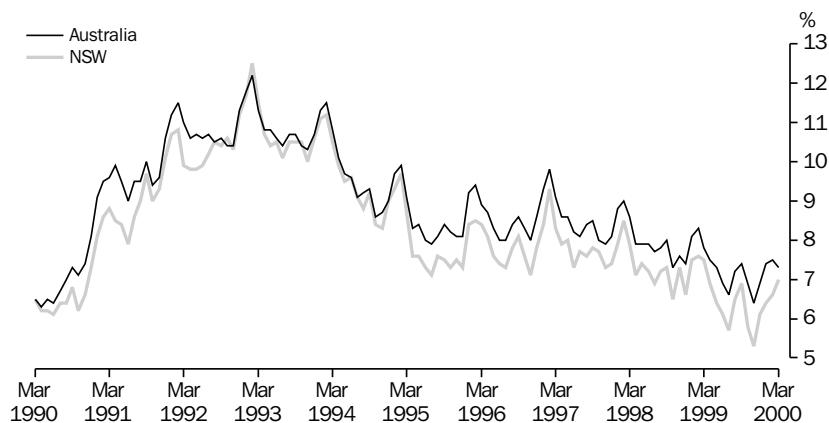
	<u>Employed</u>		<u>Unemployed</u>		<u>Labour force</u>	<u>Not in labour force</u>	<u>Civilian population aged 15 years and over</u>	<u>Unemployment rate(a)</u>	<u>Participation rate(b)</u>
	<u>Full-time workers</u>	<u>Total</u>	<u>Looking for full-time work</u>	<u>Total</u>					
	'000	'000	'000	'000					
PERSONS									
March									
1996	2 140.4	2 801.6	199.1	255.3	3 056.9	1 798.6	4 855.4	8.4	63.0
1997	2 158.7	2 818.5	197.6	255.0	3 073.6	1 849.0	4 922.6	8.3	62.4
1998	2 152.4	2 835.6	195.0	243.9	3 079.5	1 907.6	4 987.1	7.9	61.7
1999									
January	2 186.6	2 850.9	187.1	230.9	3 081.8	1 960.9	5 042.6	7.5	61.1
February	2 191.8	2 881.3	180.9	237.5	3 118.8	1 929.2	5 048.0	7.6	61.8
March	2 183.2	2 900.2	167.2	234.8	3 134.9	1 918.4	5 053.4	7.5	62.0
April	2 182.1	2 900.4	158.1	214.0	3 114.5	1 945.3	5 059.8	6.9	61.6
May	2 189.6	2 912.9	150.2	200.1	3 113.1	1 953.1	5 066.1	6.4	61.4
June	2 206.3	2 932.7	143.9	189.6	3 122.3	1 950.3	5 072.5	6.1	61.6
July	2 246.7	2 953.2	136.4	177.8	3 131.0	1 947.5	5 078.5	5.7	61.7
August	2 187.6	2 899.6	150.8	202.0	3 101.6	1 982.8	5 084.4	6.5	61.0
September	2 252.6	2 981.8	158.9	222.4	3 204.2	1 886.2	5 090.3	6.9	62.9
October	2 271.8	2 977.5	138.6	182.6	3 160.1	1 937.7	5 097.8	5.8	62.0
November	2 255.4	2 965.1	131.9	167.0	3 132.1	1 973.2	5 105.3	5.3	61.3
December	2 318.6	3 017.9	149.9	197.0	3 214.9	1 897.9	5 112.8	6.1	62.9
2000									
January	2 274.5	2 937.4	160.1	200.6	3 138.0	1 980.4	5 118.4	6.4	61.3
February	2 259.3	2 976.3	152.8	212.0	3 188.3	1 935.7	5 124.0	6.6	62.2
March	2 265.4	3 009.6	150.4	206.5	3 216.1	1 913.6	5 129.7	6.4	62.7

(a) The number of unemployed in each group expressed as a percentage of the labour force in the same group.

(b) The labour force in each group expressed as a percentage of the civilian population aged 15 years and over in the same group.

Source: Labour Force, Australia, Preliminary (Cat. no. 6202.0).

5 UNEMPLOYMENT RATE—ORIGINAL



Source: Labour Force, Australia, Preliminary (Cat. no. 6202.0)

6 COAL, ELECTRICITY AND GAS PRODUCTION, NSW AND AUSTRALIA—ORIGINAL

	Unit	Latest period	New South Wales				Australia		
			Latest figure	Change	Change	Latest figure	Change	Change	
				from prior period	from same period prior year		from prior period	from same period prior year	
			%	%		%	%		
Raw coal won—									
Underground	'000 tonnes	Dec 99	4 662	7.4	39.6	7 480	5.4	55.4	
Open cut	'000 tonnes	Dec 99	7 066	13.7	8.7	16 839	-3.9	7.3	
Total	'000 tonnes	Dec 99	11 728	11.1	19.2	24 628	0.0	20.1	
Electricity	mill. kWh	Dec qtr 99	15 284	-10.0	0.4	44 591	-4.7	3.1	
Gas(a)	teraJ	Dec qtr 99	26 029	-20.0	4.0	158 557	-14.7	0.7	

(a) Available for issue through mains. Includes ACT.

Source: Joint Coal Board for NSW and Australia from ABS unpublished statistics, Manufacturing Production, Australia (Cat. no. 8301.0).

7 COAL, ELECTRICITY AND GAS PRODUCTION, NSW—ORIGINAL

	Raw coal won					Electricity	Gas(a)
	Underground	Open cut	Total	Electricity	Gas(a)		
	'000 tonnes	'000 tonnes	'000 tonnes				
1996-97	54 642	69 036	123 678	62 788	109 284		
1997-98	58 299	75 710	134 009	61 804	111 665		
1998-99	51 158	80 209	131 367	63 743	110 092		
1998							
October	4 732	7 131	11 863	—	—		
November	3 988	6 931	10 919	15 227	25 039		
December	3 346	6 500	9 846	—	—		
1999							
January	3 273	6 159	9 432	—	—		
February	3 848	6 913	10 761	15 609	22 367		
March	4 921	7 827	12 748	—	—		
April	3 525	5 768	9 293	—	—		
May	4 664	6 303	10 967	16 365	30 428		
June	5 209	7 448	12 657	—	—		
July	4 137	6 270	10 407	—	—		
August	3 820	6 306	10 126	16 977	32 555		
September	5 552	8 215	13 767	—	—		
October	4 045	6 084	10 129	—	—		
November	4 340	6 213	10 553	15 284	26 029		
December	4 662	7 066	11 728	—	—		

(a) Available for issue through mains. Includes ACT.

Source: Joint Coal Board, Manufacturing Production, Australia (Cat. no. 8301.0).

8 BUILDING APPROVALS—NSW AND AUSTRALIA

	Unit	Latest period	New South Wales				Australia		
			Latest figure	%	%	Latest figure	%	%	
									Change from prior period
Number of dwelling units(a) (seasonally adjusted)—									
New houses	no.	Feb 2000	2 843	6.6	17.1	11 679	4.9	23.1	
Total	no.	Feb 2000	4 450	8.1	7.9	15 855	-1.1	16.8	
Value of new residential building (seasonally adjusted)	\$m	Feb 2000	569.2	-7.6	11.9	1 957.6	-2.0	29.0	
Value of alterations and additions to residential building(b) (seasonally adjusted)	\$m	Feb 2000	130.8	45.2	24.8	308.5	10.7	21.1	
Value of non-residential building(c) (original)	\$m	Feb 2000	279.4	-21.7	-35.3	823.4	-6.6	-33.1	
Value of all building (original)	\$m	Feb 2000	926.5	0.1	-7.0	3 014.0	11.4	4.0	

(a) Includes dwelling units approved as part of the construction of non-residential building and alterations and additions to existing buildings (including conversions to dwelling units).

(b) Valued at \$10,000 or more. Includes conversions of existing buildings into residential buildings.

(c) Valued at \$50,000 or more.

Source: *Building Approvals, Australia* (Cat. no. 8731.0).

9 BUILDING APPROVALS—NSW

	Number of dwelling units(a), seasonally adjusted				Value of building approvals			
	New houses		Total		Seasonally adjusted		Original	
	Private sector	Total	Private sector	Total	New residential building	Alterations and additions to residential building(b)	Non-residential building(c)	All building
	no.	no.	no.	no.				
1996-97	5 169.2	11 356.6
1997-98	5 910.9	13 348.6
1998-99	4 534.9	11 872.4
1998								
December	2 333	2 358	4 274	4 451	530.7	91.9	234.8	840.5
1999								
January	2 237	2 262	4 182	4 286	503.7	92.5	297.4	757.2
February	2 413	2 428	4 052	4 126	508.7	104.8	432.0	996.2
March	2 459	2 476	4 141	4 277	497.8	90.0	395.5	1 013.6
April	2 266	2 275	4 194	4 265	482.8	89.1	207.3	781.6
May	2 582	2 610	4 174	4 252	527.0	108.5	424.4	1 141.4
June	2 452	2 464	4 478	4 548	605.4	91.1	503.7	1 171.2
July	2 725	2 737	4 414	4 578	605.4	105.2	523.2	1 258.8
August	2 537	2 539	4 949	5 024	648.7	117.8	505.7	1 269.1
September	2 284	2 327	3 990	4 052	496.3	112.9	259.1	922.7
October	2 673	2 697	4 311	4 560	570.8	119.9	264.5	882.1
November	2 701	2 717	3 944	4 056	512.3	102.5	263.0	965.7
December	3 012	3 032	4 188	4 232	554.2	114.6	277.1	936.4
2000								
January	2 649	2 666	4 042	4 116	616.0	90.1	356.8	925.7
February	2 827	2 843	4 336	4 450	569.2	130.8	279.4	926.5

(a) Includes dwelling units approved as part of the construction of non-residential building and alterations and additions to existing buildings (including conversions to dwelling units).

(b) Valued at \$10,000 or more. Includes conversions of existing buildings into residential buildings.

(c) Valued at \$50,000 or more.

Source: *Building Approvals, Australia* (Cat. no. 8731.0).

10 TURNOVER OF RETAIL ESTABLISHMENTS(a), NSW AND AUSTRALIA—SEASONALLY ADJUSTED

	Latest period	New South Wales				Australia			
		Latest figure		Change from prior period	Change from same period prior year	Latest figure		Change from prior period	Change from same period prior year
		\$m	%	%	\$m	%	%		
Food retailing	Feb 2000	1 524.1	-0.8	-0.2	4 747.6	-1.2	1.0		
Department stores	Feb 2000	374.8	2.0	5.3	1 061.7	1.2	4.1		
Clothing and soft good retailing	Feb 2000	268.4	-7.2	-5.3	748.1	-6.3	-3.9		
Household good retailing	Feb 2000	461.5	5.0	21.3	1 397.9	0.0	9.4		
Recreational good retailing	Feb 2000	209.2	-3.5	6.5	621.5	2.0	3.9		
Other retailing	Feb 2000	430.8	2.8	7.4	1 207.5	-0.7	2.5		
Hospitality and services	Feb 2000	842.0	-0.3	-2.9	2 093.2	3.0	5.8		
Total value of retail sales	Feb 2000	4 110.8	-0.1	2.5	11 877.4	-0.2	3.0		

(a) The figures shown are derived from a monthly survey of retail establishments. Excludes motor vehicle, boat and caravan dealers, service stations, smash repairers, tyre and battery retailers, bread and milk vendors, footwear repairers and electrical appliance repairers n.e.c. Retail establishments which do not have employees are excluded from the survey. Turnover includes retail sales, wholesale sales, takings from repairs, meals and hiring of goods; and commissions from agency activity (e.g. commissions received from collecting dry cleaning, selling lottery tickets etc.).

Source: Retail Trade, Australia (Cat. no. 8501.0).

11 TURNOVER OF RETAIL ESTABLISHMENTS(a), NSW—SEASONALLY ADJUSTED

	Food retailing	Department stores	Clothing and soft good retailing	Household good retailing	Recreational good retailing	Other retailing	Hospitality and services	Total
	\$m	\$m	\$m	\$m	\$m	\$m	\$m	\$m
1998								
December	1 503.3	344.4	284.2	371.5	192.8	386.6	769.7	3 852.5
1999								
January	1 548.0	387.7	291.7	408.0	202.2	399.5	840.2	4 077.2
February	1 527.5	355.9	283.3	380.6	196.4	401.0	867.2	4 011.9
March	1 568.6	364.2	287.5	375.7	210.3	390.0	880.6	4 077.0
April	1 518.6	360.1	296.9	389.5	208.6	417.7	876.6	4 068.0
May	1 526.4	353.6	282.2	387.3	198.4	425.8	884.0	4 057.7
June	1 537.4	343.3	285.2	390.3	203.0	409.0	875.2	4 043.3
July	1 536.0	364.4	278.6	406.1	216.4	409.9	846.0	4 057.4
August	1 557.2	370.3	303.0	436.7	207.6	426.2	826.5	4 127.4
September	1 582.3	364.8	298.2	456.1	211.6	426.3	869.9	4 209.2
October	1 565.2	380.5	304.8	466.6	202.2	421.0	833.5	4 173.9
November	1 567.6	381.3	311.3	432.0	196.1	437.4	826.5	4 152.3
December	1 582.3	374.0	304.0	418.8	199.9	445.4	854.4	4 178.8
2000								
January	1 536.7	367.3	289.2	439.7	216.7	419.2	844.9	4 113.7
February	1 524.1	374.8	268.4	461.5	209.2	430.8	842.0	4 110.8

(a) The figures shown are derived from a monthly survey of retail establishments. Excludes motor vehicle, boat and caravan dealers, service stations, smash repairers, tyre and battery retailers, bread and milk vendors, footwear repairers and electrical appliance repairers n.e.c. Retail establishments which do not have employees are excluded from the survey. Turnover includes retail sales, wholesale sales, takings from repairs, meals and hiring of goods; and commissions from agency activity (e.g. commissions received from collecting dry cleaning, selling lottery tickets etc.).

Source: Retail Trade, Australia (Cat. no. 8501.0).

12 NEW MOTOR VEHICLE REGISTRATIONS(a), NSW AND AUSTRALIA—SEASONALLY ADJUSTED

	Latest period	New South Wales			Australia		
		Latest figure	Change from prior period	Change from same period prior year	Latest figure	Change from prior period	Change from same period prior year
		no.	%	%	no.	%	%
Passenger vehicles	Feb 2000	18 384	4.0	-0.1	52 461	-2.0	-2.7
Other vehicles (excluding motor cycles)	Feb 2000	3 965	8.0	18.2	11 188	1.5	7.4
Total registrations (excluding motor cycles)	Feb 2000	22 348	4.7	2.7	63 649	-1.4	-1.1

(a) Includes vehicles (other than those of the defence forces) owned by Government departments and authorities. Excludes mobile plant and equipment, tractors, trailers and non-motorised caravans.

Source: *New Motor Vehicle Registrations, Australia, Preliminary (Cat. no. 9301.0)*.

13 NEW MOTOR VEHICLE REGISTRATIONS(a), NSW—SEASONALLY ADJUSTED

	Passenger vehicles	Other vehicles (excluding motor cycles)	Total (excluding motor cycles)
	no.	no.	no.
1998			
December	19 698	3 493	23 191
1999			
January	19 048	3 588	22 636
February	18 398	3 354	21 752
March	19 292	3 574	22 865
April	19 504	3 372	22 876
May	18 845	3 184	22 029
June	19 442	3 363	22 805
July	19 633	3 748	23 381
August	17 713	3 449	21 162
September	18 022	3 553	21 574
October	17 819	3 802	21 621
November	18 426	3 942	22 368
December	19 679	4 395	24 074
2000			
January	17 675	3 672	21 347
February	18 384	3 965	22 348

(a) Includes vehicles (other than those of the defence forces) owned by Government departments and authorities. Excludes mobile plant and equipment, tractors, trailers and non-motorised caravans.

Source: *New Motor Vehicle Registrations, Australia, Preliminary (Cat. no. 9301.0)*.

14 ACCOMMODATION ESTABLISHMENTS(a) NSW AND AUSTRALIA—ORIGINAL

	New South Wales					Australia		
	Unit	Latest period	Latest figure	Change	Change	Latest figure	Change	Change
				from prior period	from same period prior year		from prior period	from same period prior year
			%	%		%	%	
Room nights	'000	Dec qtr 99	3 423.1	2.3	6.6	10 413.6	0.2	5.1
Room occupancy rate	%	Dec qtr 99	60.9	-0.3	1.8	59.7	-1.8	0.5
Takings	\$'000	Dec qtr 99	395 165	5.4	10.0	1 112 447	3.2	6.6

(a) Licensed hotels with facilities, motels and guest houses and serviced apartments with 15 or more rooms or units.

Source: *Tourist Accommodation, Australia (Cat. no. 8635.0)*.

15 ACCOMMODATION ESTABLISHMENTS(a) SYDNEY AND NSW—ORIGINAL

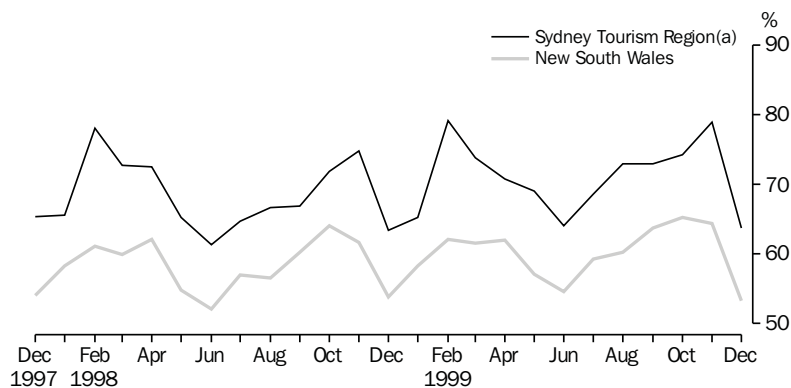
	Sydney Tourism Region(b)			New South Wales		
	Room nights	Room occupancy rate	Takings	Room nights	Room occupancy rate	Takings
	'000	%	\$'000	'000	%	\$'000
1998						
September qtr	1 640.0	66.1	222 944	3 077.3	57.9	342 102
December qtr	1 777.0	70.0	246 125	3 210.5	59.8	359 172
1999						
March qtr	1 828.8	72.5	248 997	3 213.2	60.6	360 674
June qtr	1 731.3	68.0	226 273	3 099.9	57.9	332 669
Sept qtr	1 865.9	71.6	247 543	3 345.0	61.1	375 014
December qtr	1 962.5	72.3	276 165	3 423.1	60.9	395 165

(a) Licensed hotels with facilities, motels and guest houses and serviced apartments with 15 or more rooms or units.

(b) Excludes Gosford, Wyong and Blue Mountains Statistical Local Areas.

Source: *Tourist Accommodation, Small Area Data, NSW (Prod. no. 8635.1.40.001)*.

16 ACCOMMODATION ESTABLISHMENTS,
MONTHLY ROOM OCCUPANCY RATE—ORIGINAL



(a) Excludes Gosford, Wyong and Blue Mountains Statistical Local Areas.

Source: *Tourist Accommodation, Small Area Data, NSW (Prod. no. 8635.1.40.001)*.

17 CONSUMER AND PRODUCER PRICE INDEXES—NSW AND AUSTRALIA

	Unit	Latest period	New South Wales(a)			Australia(b)		
			Latest figure	Change from prior period	Change from same period prior year	Latest figure	Change from prior period	Change from same period prior year
				%	%		%	%
Consumer Price Index (all groups)	1989-90 =100.0	Mar qtr 2000	125.8	0.9	2.6	125.2	0.9	2.8
Price index of materials used in house building (all groups)	1989-90 =100.0	Mar qtr 2000	128.0	2.9	4.9	123.8	1.9	3.6
Price index of materials used in building other than house building (all groups)	1989-90 =100.0	Mar qtr 2000	116.4	1.0	1.0	116.4	0.9	1.0

(a) Refers to State capital city—Sydney.

(b) For the Consumer Price Index this is the weighted average of eight capital cities and for the other two indexes, the weighted average of the six State capital cities.

Source: Consumer Price Index, Australia (Cat. no. 6401.0), Price Index of Materials Used in Building Other Than House Building, Six State Capital Cities (Cat. no. 6407.0), Price Index of Materials Used in House Building, Six State Capital Cities (Cat. no. 6408.0).

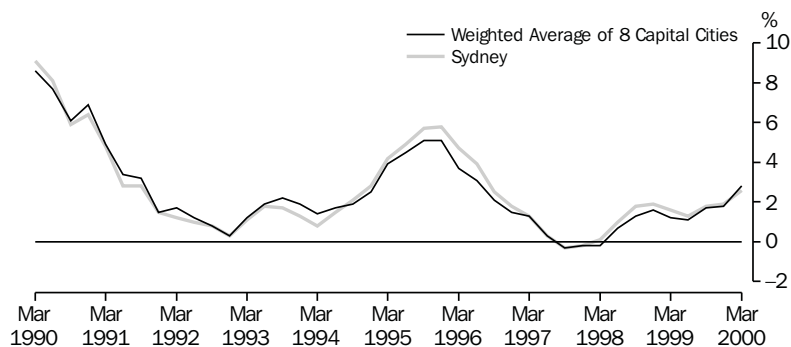
18 CONSUMER AND PRODUCER PRICE INDEXES—NSW(a)

	Consumer Price Index, all groups	Price Index of materials used in house building, all groups	Price Index of materials used in building other than house building, all groups
	1989-90 = 100.0	1989-90 = 100.0	1989-90 = 100.0
1998			
December qtr	122.4	121.8	115.1
1999			
March qtr	122.6	122.0	115.2
June qtr	123.0	121.8	115.4
September qtr	124.1	123.7	115.1
December qtr	124.7	124.4	115.3
2000			
March qtr	125.8	128.0	116.4

(a) Refers to State capital city—Sydney.

Source: Consumer Price Index, Australia (Cat. no. 6401.0), Price Index of Materials Used in Building Other Than House Building, Six State Capital Cities (Cat. no. 6407.0), Price Index of Materials Used in House Building, Six State Capital Cities (Cat. no. 6408.0).

19 CONSUMER PRICE INDEX, ANNUAL RATE OF CHANGE



Source: Consumer Price Index (Cat. no. 6401.0).

20 SECURED HOUSING FINANCE COMMITMENTS TO INDIVIDUALS FOR OWNER OCCUPATION—NSW AND AUSTRALIA

	Latest period	New South Wales			Australia		
		Latest figure \$m	Change from prior period %	Change from same period prior year %	Latest figure \$m	Change from prior period %	Change from same period prior year %
Lending commitments for the construction or purchase of dwellings—							
Construction of dwellings	Feb 2000	324	43.0	35.7	1 003	32.9	33.6
Purchase of newly erected dwellings	Feb 2000	103	47.1	37.7	270	44.8	26.6
Purchase of established dwellings(a)	Feb 2000	1 759	25.3	43.8	4 330	26.1	37.1
Refinancing of existing dwellings	Feb 2000	423	37.1	35.6	1 063	33.1	34.1
Lending commitments for alterations and additions	Feb 2000	114	36.6	28.7	284	33.7	28.3
Total lending commitments to individuals for housing(b)	Feb 2000	2 609	29.8	41.1	6 665	28.8	35.6
Total lending commitments to individuals for housing (seasonally adjusted)(b)	Feb 2000	2 709	-0.1	37.6	6 796	4.1	32.7

(a) Excludes refinancing.

(b) Excludes alterations and additions.

Source: *Housing Finance for Owner Occupation, Australia (Cat. no. 5609.0)*.

21 SECURED HOUSING FINANCE COMMITMENTS TO INDIVIDUALS FOR OWNER OCCUPATION—NSW

	Lending commitments for the construction or purchase of dwellings					Total lending commitments to individuals for housing(b)	
	Construction of dwellings \$m	Purchase of newly erected dwellings \$m	Purchase of established dwellings(a) \$m	Refinancing of existing dwellings \$m	Lending commitments for alterations and additions \$m	Original \$m	Seasonally adjusted \$m
1996-97	2 117	1 234	12 566	4 062	1 221	19 979	..
1997-98	2 625	1 280	14 445	3 573	1 174	21 923	..
1998-99	2 990	1 147	16 761	4 026	1 126	24 925	..
1998							
December	235	96	1 343	295	82	1 970	2 069
1999							
January	176	63	1 025	249	74	1 512	2 087
February	239	75	1 223	312	89	1 849	1 969
March	341	106	1 741	407	126	2 595	2 214
April	242	79	1 600	333	97	2 255	2 271
May	276	96	1 787	364	110	2 524	2 387
June	300	116	1 851	418	105	2 686	2 476
July	271	96	1 786	335	93	2 489	2 410
August	286	90	1 800	396	96	2 572	2 525
September	315	101	1 841	394	106	2 652	2 524
October	290	104	1 956	418	110	2 768	2 993
November	329	115	2 122	460	120	3 026	2 889
December	275	90	1 893	415	105	2 672	2 792
2000							
January	226	70	1 404	309	83	2 010	2 712
February	324	103	1 759	423	114	2 609	2 709

(a) Excludes refinancing.

(b) Excludes alterations and additions.

Source: *Housing Finance for Owner Occupation, Australia (Cat. no. 5609.0)*.

	July–February			
	Preliminary Actual	Estimates		
	1998–99	1999–2000	1998–99	1999–2000
	\$m	\$m	\$m	\$m
Current receipts—				
Stamp duties	3 947	3 747	2 566	3 002
Payroll tax	3 617	3 637	2 371	2 472
Land tax	958	859	278	170
Motor vehicle taxes	1 055	977	676	645
Gaming and betting	1 419	1 558	864	976
Commonwealth safety net taxes	1 975	1 989	1 324	1 360
Other taxes	1 251	1 245	805	854
Commonwealth general purpose grants	4 687	5 162	3 085	3 498
Commonwealth specific purpose grants	3 464	3 449	2 268	2 376
Dividends/tax equivalents	1 280	1 173	1 012	825
Other current receipts	1 316	1 256	772	782
<i>Total current receipts</i>	<i>24 969</i>	<i>25 052</i>	<i>16 012</i>	<i>16 960</i>
Current payments—				
Interest payments	1 393	1 124	821	596
Superannuation	1 499	1 640	977	1 082
Subsidies to non-budget sector—				
Redundancies	n.a.	86	56	52
Services	n.a.	840	698	493
Total	990	926	754	545
Departmental payments—				
Redundancies	n.a.	98	42	62
Health	n.a.	5 949	3 826	3 998
Education(a)	n.a.	5 440	3 537	3 594
Law and order(b)	n.a.	1 862	1 174	1 242
Community services	n.a.	1 253	815	839
Other	n.a.	6 105	3 645	3 849
Total	20 406	20 707	13 039	13 584
Treasurer's advances(c)	..	160
Less User charges	-2 092	-2 110	-1 345	-1 479
<i>Total current outlays</i>	<i>22 196</i>	<i>22 447</i>	<i>14 246</i>	<i>14 328</i>
Current result surplus/deficit(-)	2 773	2 605	1 775	2 632
Capital receipts—				
Commonwealth specific purpose grants	831	784	473	475
Other capital receipts	437	151	338	52
<i>Total capital receipts</i>	<i>1 268</i>	<i>935</i>	<i>811</i>	<i>527</i>
Capital outlays—				
Gross fixed capital payments	2 946	2 798	1 883	1 586
Capital grants	1 102	1 104	574	606
Less Asset sales	-597	-576	-394	-248
<i>Total capital outlays</i>	<i>3 451</i>	<i>3 326</i>	<i>2 063</i>	<i>1 944</i>
Capital result surplus/deficit(-)	-2 183	-2 391	-1 252	-1 417
Government Finance Statistics result surplus/deficit(-)	590	214	523	1 215

(a) Includes Department of Training and Education Co-ordination, Department of School Education, Office of the Board of Studies and TAFE.

(b) Includes Attorney Generals Department, Department of Corrective Services and Police Services.

(c) Expenditure from the Treasurer's Advance is included in the relevant current payments figures.

Source: Financial Statement released by NSW Treasury. Figures may differ from data published in annual ABS publications.

23 ACTUAL PRIVATE NEW FIXED CAPITAL EXPENDITURE, CURRENT PRICES—NSW AND AUSTRALIA, TREND

Type of asset—	Latest period	New South Wales			Australia		
		Latest figure	Change from prior period	Change from same period prior year	Latest figure	Change from prior period	Change from same period prior year
		\$m	%	%	\$m	%	%
New buildings and structures	Dec qtr 99	891	-4.5	-17.9	2 809	-4.3	-24.0
Equipment, plant and machinery	Dec qtr 99	2 535	-1.0	-2.1	7 546	-0.7	-4.0
Total	Dec qtr 99	3 426	-2.0	-6.8	10 355	-1.7	-10.4

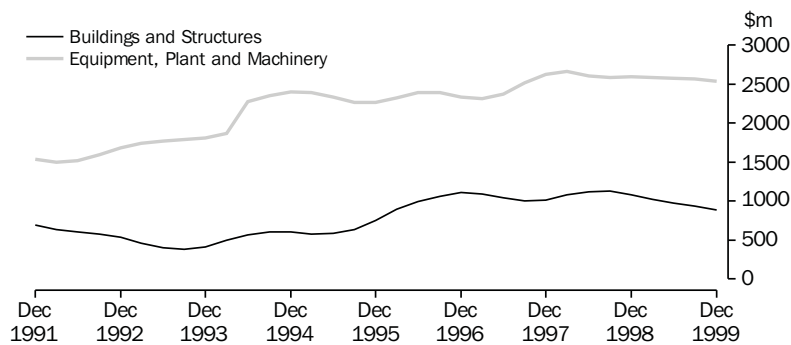
Source: State Estimates of Private New Capital Expenditure (Cat. no. 5646.0).

24 ACTUAL PRIVATE NEW FIXED CAPITAL EXPENDITURE, CURRENT PRICES—NSW, TREND

	Type of asset		
	New buildings and structures	Equipment, plant and machinery	Total
	\$m	\$m	\$m
1998			
September qtr	1 126	2 589	3 715
December qtr	1 085	2 590	3 675
1999			
March qtr	1 026	2 589	3 615
June qtr	975	2 573	3 548
September qtr	933	2 562	3 495
December qtr	891	2 535	3 426

Source: State Estimates of New Capital Expenditure (Cat. no. 5646.0).

25 ACTUAL PRIVATE NEW FIXED CAPITAL EXPENDITURE, CURRENT PRICES, NSW—TREND



Source: State Estimates of New Capital Expenditure (Cat. no. 5646.0).

26 INTERNATIONAL TRADE, IMPORTS(a) AND EXPORTS(b)—NSW AND AUSTRALIA

	Latest period	New South Wales			Australia		
		Latest figure	Change from prior period	Change from same period prior year	Latest figure	Change from prior period	Change from same period prior year
		\$m	%	%	\$m	%	%
Overseas imports into NSW	Feb 2000	3 712	7.5	20.0	8 624	6.4	21.3
Total overseas exports(c)	Feb 2000	1 479	11.1	12.0	7 768	21.4	33.2
Export commodities and SITC(d) code—							
Meat and meat preparations (01)	Feb 2000	85	26.3	7.7	352	62.7	6.8
Cereals and cereal preparations (04)	Feb 2000	117	71.9	17.4	531	40.3	32.7
Wool and other animal hair (268)	Feb 2000	70	27.7	14.9	267	42.3	24.7
Coal, coke and briquettes (32)	Feb 2000	225	-13.4	-17.0	598	-10.9	-18.7
Iron and steel (67)	Feb 2000	60	15.9	-13.5	112	39.3	-4.4
Aluminium (684)	Feb 2000	119	18.2	52.9	349	19.7	74.5
Office machines and automatic data processing machines (75)	Feb 2000	33	38.2	32.5	50	40.3	-7.9

(a) Figures shown are Customs value.

(b) Figures shown are Free On Board (FOB) values.

(c) Excludes re-exported goods.

(d) Standard International Trade Classification Revision 3.

Source: International Trade database.

27 INTERNATIONAL TRADE, IMPORTS(a) AND EXPORTS(b)—NSW

	Overseas exports of SITC(c) commodities								
	Overseas imports into NSW	Total overseas exports(d)	Meat and meat preparations (01)	Cereals and cereal preparations (04)	Wool and other animal hair (268)	Coal, coke and briquettes (32)	Iron and steel (67)	Aluminium (684)	Office machines and automatic data processing machines (75)
	\$m	\$m	\$m	\$m	\$m	\$m	\$m	\$m	\$m
1996-97	34 229	17 730	784	1 540	859	3 426	968	993	535
1997-98	38 481	19 678	923	1 588	1 061	4 048	1 167	1 224	522
1998-99	42 142	r1 7974	948	r 1 222	685	3 766	958	1 151	360
1998									
December	3 466	r1 679	84	142	67	364	70	91	24
1999									
January	3 020	r1 336	70	112	42	337	68	102	18
February	3 093	r1 321	79	99	61	272	70	78	25
March	3 760	r1 490	91	112	55	305	83	107	29
April	3 386	r1 290	74	95	41	234	56	79	30
May	3 603	r1 508	75	83	57	283	103	93	42
June	3 594	r1 452	76	r110	46	260	59	95	33
July	3 497	r1 517	83	108	54	298	45	104	35
August	r3 806	r1 540	85	106	50	279	48	96	38
September	r4 098	r1 573	r81	94	69	248	59	107	31
October	3 760	r1 555	91	103	78	239	53	105	31
November	r4 260	r1 579	90	107	r93	244	67	104	37
December	r3 977	r1 578	r94	115	83	r211	68	112	31
2000									
January	r3 454	r1 332	r68	r68	r55	r260	r52	r101	r24
February	3 712	1 479	85	117	70	225	60	119	33

(a) Figures shown are Customs value.

(b) Figures shown are Free On Board (FOB) values.

(c) Standard International Trade Classification Revision 3.

(d) Excludes re-exported goods.

Source: International Trade database.

FOR MORE INFORMATION...

- INTERNET* **www.abs.gov.au** the ABS web site is the best place to start for access to summary data from our latest publications, information about the ABS, advice about upcoming releases, our catalogue, and Australia Now—a statistical profile.
- LIBRARY* A range of ABS publications is available from public and tertiary libraries Australia-wide. Contact your nearest library to determine whether it has the ABS statistics you require, or visit our web site for a list of libraries.
- CPI INFOLINE* For current and historical Consumer Price Index data, call 1902 981 074 (call cost 75c per minute).
- DIAL-A-STATISTIC* For the latest figures for National Accounts, Balance of Payments, Labour Force, Average Weekly Earnings, Estimated Resident Population and the Consumer Price Index call 1900 986 400 (call cost 75c per minute).

INFORMATION SERVICE

Data which have been published and can be provided within five minutes are free of charge. Our information consultants can also help you to access the full range of ABS information—ABS user pays services can be tailored to your needs, time frame and budget. Publications may be purchased. Specialists are on hand to help you with analytical or methodological advice.

- PHONE* **1300 135 070**
- EMAIL* **client.services@abs.gov.au**
- FAX* 1300 135 211
- POST* Client Services, ABS, GPO Box 796, Sydney 1041

WHY NOT SUBSCRIBE?

ABS subscription services provide regular, convenient and prompt deliveries of ABS publications and products as they are released. Email delivery of monthly and quarterly publications is available.

- PHONE* 1300 366 323
- EMAIL* subscriptions@abs.gov.au
- FAX* 03 9615 7848
- POST* Subscription Services, ABS, GPO Box 2796Y, Melbourne 3001



2130710005007
ISSN 1031-8534

RRP \$16.00

© Commonwealth of Australia 2000

Produced by the Australian Bureau of Statistics